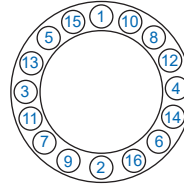
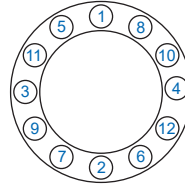
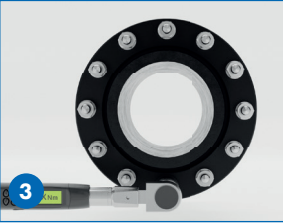
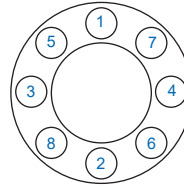
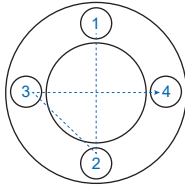
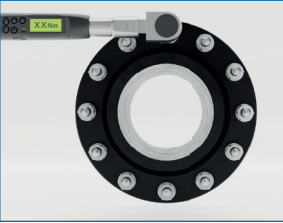
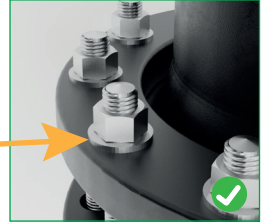
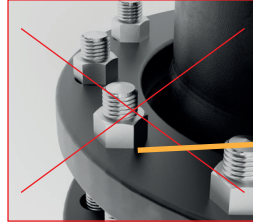
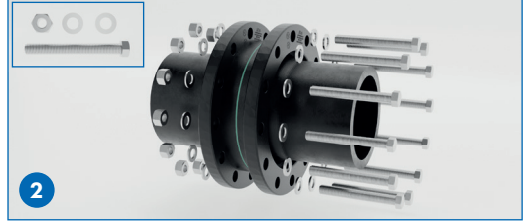
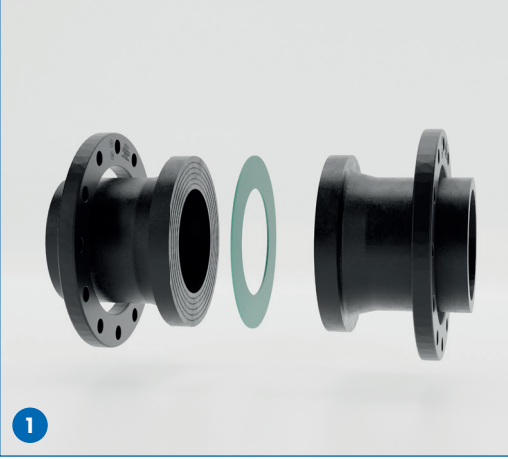




NTG Plastik San. ve Tic. A.Ş.

Head Office : Kurtköy Sanayi Mh. Ertar Sk. No:18, 34906 Pendik-İstanbul • Tel: +90 216 595 3121 • Fax: +90 216 595 3125
Factory : Yazlı Gürgen Mh. Fabrikalar Cd. No:49 Karşıyaka-Sakarya • Tel: +90 264 407 1015 • Fax: +90 264 407 1020



RECOMMENDATION			
D (mm)	PN	LOCK WASH	TORQUE(Nm)
20	PN16	M12	15
25	PN16	M12	15
32	PN16	M12	15
40	PN16	M16	20
50	PN16	M16	30
63	PN16	M16	35
75	PN16	M16	40
90	PN16	M16	40
110	PN16	M16	40
125	PN16	M16	40
140	PN16	M16	50
160	PN16	M20	60
180	PN16	M20	60
200	PN16	M20	70
225	PN16	M20	70
250	PN16	M24	80
280	PN16	M24	80
315	PN16	M24	100
355	PN16	M24	120
400	PN16	M27	140
200	PN10	M20	70
225	PN10	M20	70
250	PN10	M20	80
280	PN10	M20	80
315	PN10	M20	100
355	PN10	M20	120
400	PN10	M24	140
450	PN10	M24	150
500	PN10	M24	150
560	PN10	M27	170
630	PN10	M27	170

