

# TECHNICAL DATASHEET



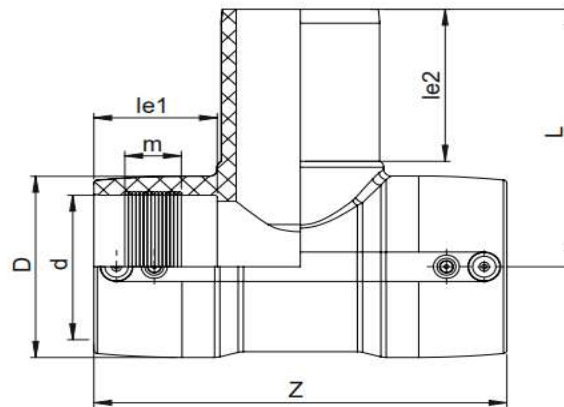
## EF TEE 90°

04 Update - 06/2023

### TECHNICAL DATA

Article No	101 117 2041 0025
d (mm)	25
D (mm)	44
Z (mm)	98
L (mm)	90
le1 (mm)	35
le2 (mm)	65
m (mm)	19
Weight (Kg)	0,120
Box Quantity (pcs)	75
Box Dimension (cm)	31x50x34

### INJECTION MOULDED



### IDENTIFICATION OF PRODUCT

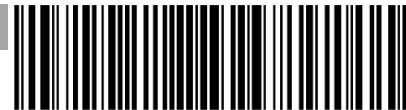
D(mm)	25
SDR	11
RAW MATERIAL	PE 100
PRESSURE CLASS	16 Bar Water 10 Bar Gas
TRADEMARK	NTG
EXECUTION	Injection Moulded
STANDARD	EN 12201-3

SPECIFICATION	Suitable for SDR9...11 pipe 4 mm pin connectors
---------------	--

### EF SPECIFICATION

WELDING VOLTAGE	40V
RESISTANCE	4.49 Ω
WELDING TIME	35 Sec.
COOLING TIME	3 Min.
WINDING TYPE	Monofilar

### WELDING BARCODE



971420300253994495035118

Tolerance on diameters and thickness according to the standards. The other dimensions are specialized. Tolerance  $\pm 5\%$ . NTG PLASTIK reserves all the right to change any information without giving prior notice. The production, distribution and utilization of this document without explicit authorization is prohibited.