

TECHNICAL DATASHEET



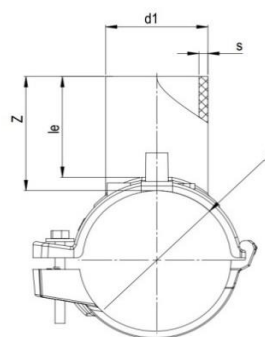
EF SPIGOT SADDLE

04 Update - 02/2023

TECHNICAL DATA

Article No	001 117 2091 0041
d (mm)	40
d1 (mm)	32
Z (mm)	55
L (mm)	120
le (mm)	46
S (mm)	3,0
Weight (Kg)	0,180
Box Quantity (pcs)	50
Box Dimension (cm)	55x30x36

INJECTION MOULDED



IDENTIFICATION OF PRODUCT

D(mm)	40-32
SDR	11
RAW MATERIAL	PE 100
PRESSURE CLASS	16 Bar Water 10 Bar Gas
TRADEMARK	NTG
EXECUTION	Injection Moulded
STANDARD	EN 12201-3 EN 1555-3 AS / NZS 4129
SPECIFICATION	Suitable for SDR9....11 pipe Long Spigot 4 mm pin connectors

EF SPECIFICATION

WELDING VOLTAGE	40 V
RESISTANCE	10,5 Ω
WELDING TIME	50 Sec.
COOLING TIME	10 Min.
WINDING TYPE	Monofilar
WELDING BARCODE	



142007310402401055050110

Tolerance on diameters and thickness according to the standards. The other dimensions are specialized. Tolerance $\pm 5\%$. NTG PLASTIK reserves all the right to change any information without giving prior notice. The production, distribution and utilization of this document without explicit authorization is prohibited.